

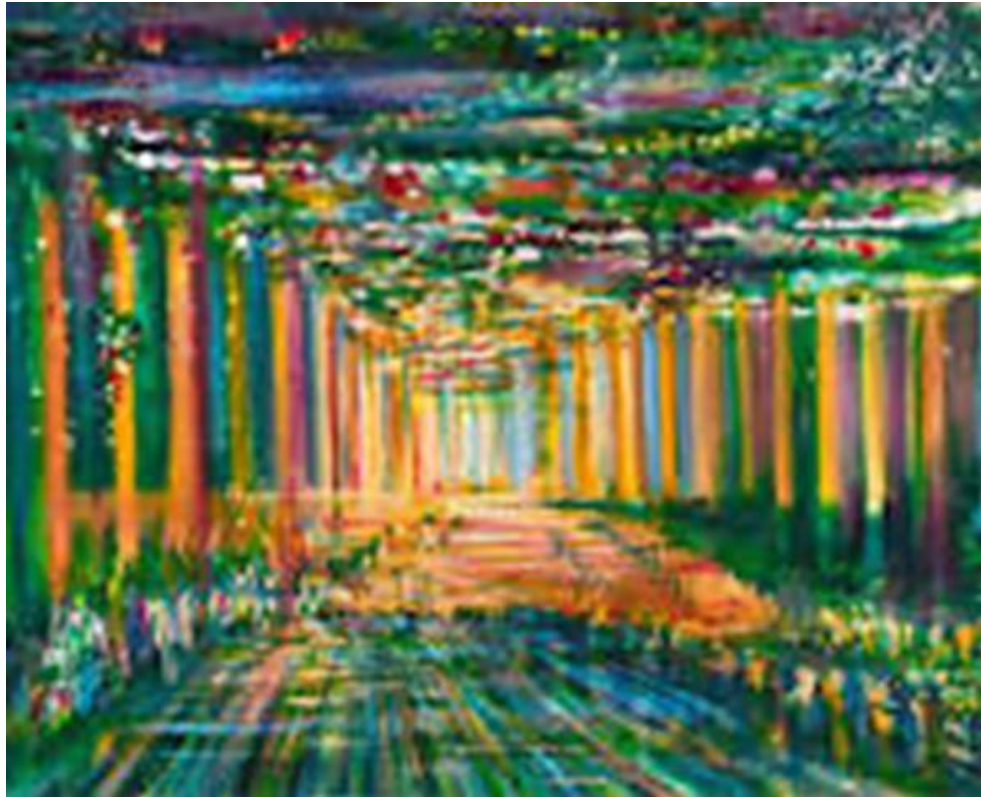


*Vineyard of Peace
by Ilana Manolson*

KEREM SHALOM

Adult Programming Newsletter

Volume 6.5 – May/June 2026/5786



Artwork by Yoram Raanan
Shavuot

**Welcome to our varied offerings,
brought to you on Zoom, in person, or both (“hybrid”) as noted.**

*Brought to you with Creativity, Calmness, Commitment and Camaraderie by your
Adult Programming Committee*

You can always find the latest offerings at: <https://keremshalom.org/adult-programming>
and check out the *KS Weekly News* (emailed each Thursday),
for the most up-to-date information.

Upcoming Special Events	3
MetroWest Community Shavuot.....	6
Growing Older in Community.....	7
Kerem Shalom News	8
Marla’s Corner, or Who Knew?	10
Literary Groups	11
KS Members in the Arts.....	13
Leisure	15
Judaic Studies in Community.....	16
Health & Comfort for Mind, Body and Soul.....	17

Policies for COVID-19 and Other Respiratory Infections

Masks are currently optional for all events at Kerem Shalom. We recommend that in-person attendees be vaccinated and have appropriate boosters. [CLICK HERE](#) for the current policy.

Upcoming Special Events

Leadership Starts Here

How Congregations Can Develop the Next Generation of Jewish Leaders with Rabbi Benjamin Ross
An L.E.D. program*



Sunday, May 3

10:30am – 12pm

Location: In person at KS

Across the country, we are experiencing distrust and disengagement, while the longing for meaning, connection, and purpose has never been greater. Rabbi Benjamin Ross —Founder and Executive Director of the [Amen Center for Civic and Spiritual Leadership](#) —believes we face a unique opportunity to invest in leadership formation as the engine for transforming community and congregational life. His focus is on advancing a vision of synagogues, networks, and civic partnerships—where rabbis, lay leaders, and emerging leaders strengthen one another, deepen spiritual life, and help repair the civic fabric of our communities.

Rabbi Ross will speak about Jewish leadership building and nurturing efforts underway across the US and then engage in a conversation with Kerem Shalom's current President, David Luberoff, and incoming President, Jonathan Aibel, followed by Q&A.

Please [RSVP HERE](#)

Rabbi Ross's inspirational career includes:

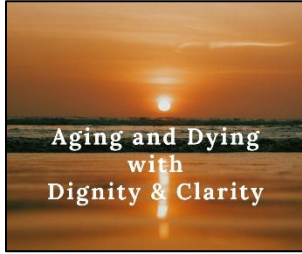
- Community organizer in Harlem and Brooklyn,
- Director of National Leadership Initiatives at Bend the Arc: A Jewish Partnership for Justice,
- Co-founder of Project Zug (connecting Jews in the U.S. and Israel through havruta (friend) learning, and
- Co-creator of Project Manna (a Jewish food initiative).

Rabbi Ross is currently a Board member of the Institute of Jewish Spirituality and teaches spiritual leadership at Hebrew Union College in NYC. He has also served as Associate Rabbi at Leo Baeck Temple (Los Angeles) and Director of Adult Engagement at Temple Shaaray Tefila in New York City.

Join us for what promises to be an exciting talk by a leader whose early childhood was in Concord, with his Jewish roots at Kerem Shalom, where his parents were among our founding members.

Join us for refreshments afterwards.

** Learn. Explore. Discuss. - Shed a little light.*



Aging and Dying with Dignity and Clarity

A Three-Part Series with Rabbi Darby & JF&CS

Across the Ages and Stages of Life: An Intergenerational Opportunity

The remaining two dates are:

- **Monday May 4 with RABBI DARBY**
- **Monday Jun 1 with JF&CS**

6:30 – 8pm

Location: In person at KS, AND on Zoom

KS Members and their loved ones

Aging offers many gifts—wisdom, perspective, resilience, and a lifetime of stories. It can also bring challenges such as illness, isolation, loss, and shifting family dynamics, and possibly, greater awareness of our own mortality. For older adults and those who love them, navigating these changes can feel complex and sometimes overwhelming.

Join Rabbi Darby and leaders from JF&CS for three evenings of learning and honest conversation designed to support older adults and other family members through the emotional and practical realities of aging and the end of life.

Join us for light refreshments after each event.

To attend either event on Zoom, [REGISTER HERE](#)

(Childcare is available for in-person attendees – Please note your childcare needs on the RSVP links below)

Monday, May 4 – End of Life Matters: Jewish Teachings and Customs, along with KS Practices, with RABBI DARBY

To attend in person, please [RSVP HERE](#)

Rabbi Darby will teach about:

- Anticipating the end of life, the Vidui and Shema
- At the time of death, caring for the body
- Funeral, burial
- Becoming mourners, Shiva, Sheloshim
- Saying Kaddish, Yizkor, and the practice of observing Yahrzeit
- Membership Matters, Kerem Shalom bereavement policies and practices

Monday, June 1 – Coping with the Grief & Loss that Accompany Illness, with a dementia specialist from JF&CS

To attend in person, please [RSVP HERE](#) by May 28

Leaders from JF&CS will discuss the concept of ambiguous loss and how conditions such as Alzheimer's disease, Dementia, and Parkinson's disease affect both individuals and caregivers. Learn strategies for coping, connecting, and finding strength in uncertainty.

Bring Your Questions

Whether you're caring for an older adult, trying to support aging parents, navigating changes for yourself, or simply want to feel more prepared, this series will leave you feeling informed, empowered, and less alone.

We will note topics of interest for future exploration within our Kerem Shalom community, which will inform planning for future learning and engagement opportunities.

Both [Kerem Shalom](#) and [Jewish Family & Children's Service](#) appreciate and depend on donations to support programs such as these.

Contact: KS Growing Older in Community at growingolder@keremshalom.org

The Israeli-Palestinian Conflict and the US: What Can We Do?

Part of the Israel Conversations Group Discussions

Sunday, May 17

3:00pm

In-person at KS
KS Members Only



While we are all so grateful to have the surviving hostages home and a tenuous ceasefire in place in Gaza, we know that there is a long road ahead to real peace in the region. Gaza still lies in rubble, Israelis remain traumatized, and there is violence daily in both Gaza and the West Bank. At the same time, we are also facing challenges to democracy and deep divisions here at home in the U.S. In this conversation with Janette Hillis-Jaffe, we'll dive into current events and explore ways we can protect our democracy here at home while promoting peace, self-determination, and security for both Israelis and Palestinians.

The program will be followed by a dessert reception.

Please [RSVP](#) by May 14

[READ MORE](#)

MetroWest Community Shavuot

This year, Kerem Shalom has joined with several local congregations in the 12th annual MetroWest Community Shavuot!



Singing to Sinai

An evening of Communal song with our own Molly Bajgot

Sunday May 17
7pm
Congregation Or Atif
97 Concord Rd, Wayland

Join singer-songwriter Molly Bajgot for an evening of music to prepare for Shavuot

Details and registration [HERE](#)



Tikkun Leil Shavuot

Celebrate Torah, music, and the power of shared story!

Thursday, May 21
6pm
Temple Israel
145 Hartford St, Natick

- 6:00pm – Community Dinner
- 6:45pm – Standing Together: The Torah of Connection
A story slam featuring community members
- 7:45pm - Workshop with our clergy!
- 9:45pm - Ma'ariv * Ten Commandments

Details and registration [HERE](#)

Growing Older in Community

Continuing the series for Kerem Shalom

Across the Ages and Stages of Life

Growing Older in Community with Kerem Shalom

The KS Growing Older in Community initiative fosters connections and support amongst KS members as we explore, share, learn, and grow older together.

We aim to offer a combination of member-led group conversations, classes, workshops, plus a print and digital resource collections in the KS library, with relevance for those in their later years. Concurrently, we aim to expand and deepen intergenerational connections.

Questions? Want to participate? Email the planning group at growingolder@keremshalom.org

Aging and Dying with Dignity and Clarity

A Three-Part Series with Rabbi Darby and Jewish Family & Children's Service (JF&CS) of Greater Boston

An Intergenerational Opportunity

Three Mondays:

Apr 13, May 4 and Jun 1

See the listing above



Growing Older in Community - Group Discussions

Date: Third Wed of each month:

May 20

Time:

9:45 - 10am - Schmooze

10am - 12pm - Meet, Share, Discuss, Inspire

Location: In Person in the KS library

KS Members Only

This discussion group has been meeting monthly since March 2025, exploring how each of us is unfolding into our later years, and finding new self-expression and contribution. Each month we choose a different topic. All members are welcome. Questions? Contact growingolder@keremshalom.org

Interested in Joining our Kerem Shalom Community?
Did you know that **long distance memberships** are available for people
who live out of the area?

Find out more: <https://keremshalom.org/join-us/>

Why not drop Robyn, our administrator, a note? ksadmin@keremshalom.org

Kerem Shalom News

Community Closet Underwear Drive KS & Concord Carlisle Foundation

Join Kerem Shalom again this year as we partner with the [Concord Carlisle Foundation's Community Closet](#) to collect underwear. While it may not be glamorous, it is a critical necessity for many. Last year, the Community Closet distributed 8,000 items of clothing to over 300 shoppers, supporting 1,200 family members facing hardship.



Please [CLICK HERE](#) for the list of “most needed items” and to sign up to donate.

DRIVE DEADLINE: May 11

All donations must be new items.

Please bring your items to KS, and place them in the designated bin in the Lobby. The KS Office is open Mondays, Wednesdays, and Thursdays, 9:30 am – 4:00 pm.

Kerem Shalom Annual Meeting

Monday June 8

6pm – Dinner

7pm – Annual Meeting

Join us as we gather together for a Community Dinner and our Annual Meeting. We will celebrate the past year at KS, honor Board members who are stepping down and welcome

new Board members, report on our many accomplishments as a congregation in FY26, and discuss upcoming transitions and our plans for the coming year.



[RSVP](#) by June 4, our catering deadline, to enjoy dinner.

[REGISTER HERE](#) (To Join Us Online)

Antisemitism Awareness Team

From Miriam Zarchan

On March 15th, the KS Antisemitism Awareness Team hosted a panel of two local high school educators to share their experiences teaching about Antisemitism

Alex Lewis has taught in the Social Studies Department at Acton-Boxborough Regional High School (ABRHS) for 16 years; Johanna Glazer has taught for over 30 years in the Social Studies Department at Concord-Carlisle High School and is currently the chair of the department.

Alex and Johanna both stressed they were not representing their departments nor their schools but rather were talking from their personal perspectives.

[CLICK HERE](#) to read an account of the discussion.

If interested in learning more, please email: antisemitism-awareness@keremshalom.org



Rabbi Darby Featured in Lilith Magazine’s “Signing the Shema”

What does it truly mean to hear the Shema? Rabbi Darby explores that question in a recent article in Lilith Magazine, reflecting on his ASL translation of Judaism’s most central prayer. Rabbi Darby offers a perspective that opens up the meaning of shema— not as a directive to listen with our ears, but as an invitation to pay attention, to direct our full awareness toward something that matters.

[READ THE ARTICLE](#)

Marla’s Corner, or Who Knew?

Last issue’s question

Did you guess last month’s mystery person? The clue was: *What member of the KS community was interviewed as an adolescent by Barbara Walters? The topic? What is it like to grow up with a working mother? (This was quite a while ago...)*

Did you guess **KS President David Luberoff**? If so, you were right! Ask him about it!



May/June Question

What member of the KS community took a polar bear plunge into chilly water (with a strong current) off a boat in **Glacier Bay, Alaska**? The member’s partner was not foolish enough to try it!

People ask me, **where do I find all these stories?** I tell them, “I ask.” The next comment is **how do I find such unusual people?** I think everyone has a story that people are going to say, “no, they really didn’t do that?” What is your story? Let me know and I will be delighted to inform the entire congregation!

Marla: adult-programming-committee@keremshalom.org

Literary Groups

Kerem Shalom Book Groups

We offer 2 different book groups



"Concord" © 2020 by Thomas McKnight, all rights reserved



Jewish Content Book Group

Hosted by Jane Appell

We discuss books with Jewish content or themes

Meeting monthly on the
2nd Tuesday of each month.

Until specified otherwise, meetings are at 12:30pm at KS.

Next Meetings

May 12. *As a Jew* by Sarah Hurwitz

Jun 9. *Sisters of Fortune* by Esther Chehebar

**July 14. *Melting Point: Family, Memory and the Search for a Promised Land*
by Rachel Cockerell**

To join, contact Jane Appell at jewish-content-bookgroup-info@keremshalom.org

Kerem Shalom Book Group

Hosted by Pat Sills
Meeting monthly

Next Meetings
TBA



To join, or for details on future books, contact Pat Sills
bookgroup-info@keremshalom.org.

KS Members in the Arts

Many of us find it especially enjoyable to attend concerts and artist shows in which KS members have an active role. It's fun to greet others at these events. We also have introduced ourselves to those we've seen at services or KS programs but don't personally know. So, we've benefited from enjoying a rewarding cultural activity while also building new connections and reinforcing existing ties with our community. We hope to see you at some of these events listed in our newsletters!

VISUAL ARTS

Marla Richmond's beautiful quilt was exhibited at the Quilters' Connection show in April.



"I learned How to Embroider at My Mama's Knee" by Marla Richmond

You can see some of **Joan Hilton's** stunning pottery at The Umbrella in Concord



Earthworks: Evolution
April 29 - June 28, 2026
The Umbrella Arts Center
40 Stow Street, Concord, MA

Read more [HERE](#)

Jill Goldman-Callahan has several current and upcoming exhibitions!



Open Studios

The Umbrella Arts Center Studio
303
40 Stow Street, Concord, MA
May 2 & 3 | 12:00–5:00 PM

Visit my studio to view new mixed media paintings. Mention this email for 10 percent off any work!

Where Words Cannot Go

The Three Stones Gallery
Featured Guest Artist
32 Main Street, Concord, MA
June 10 – July 19
Reception: June 20 | 6:00–8:00 PM

New mixed media work from my *Float* and *Reminiscent* series.



Night

E. Drumm Designs
21A Spruce Street, Acton, MA
April 3 – June 30

Black and white cold wax and charcoal work on stone paper.

Summer Exhibition

The Castle Hill Gallery
8 Meetinghouse Road, Truro, MA
July 6 – July 18
Opening Reception: July 9 | 5:00 PM

Luminous mixed media paintings.



Jill Goldman-Callahan is also offering her class, *Spontaneous Textural Painting* at Castle Hill in Truro this summer. Read about it [HERE](#).

Cynthia Katz (<https://www.cynthia-katz.com/>) will be in her studio at The Umbrella Arts Center in Concord for [Open Studios](#) on **May 2 & 3 from 12 – 5pm**. Stop by, say hello, see her work.

We welcome news of any creative arts you are involved in and would like to share with the community.

Leisure



Nature Walk

Dates: TBD, *when the weather improves*

Time: Likely early afternoon

Place: To be decided by the walkers

The Adult Programming Committee is offering walks to mingle with old friends, meet new friends and savor the joy of the natural wonders that emerge in this beautiful place we have the

fortune to call home.

Please join us – all welcome. Contact Rosalie (Rosalie@keremshalom.org) to participate, and to suggest your favorite walking locations.

KS Women's Walk

A group of KS women is walking along neighborhood trails or (when conditions require) safe local sidewalks.

Tuesdays at 2:00 or 2:30pm

Contact: Karen Belinky via Rosalie: Rosalie@KeremShalom.org for updates





Mah Jongg

Would you like to play Mah Jongg?

We meet **in person** at Kerem Shalom

Contact KS Member Nanci Bell:

mah-jongg@keremshalom.org

Judaic Studies in Community

Shabbat Shalom Group

Led by Rosalie and group members

Fridays

10:30 - 10:45am - Informal check-ins (optional)

10:45am - 12pm - Meaningful discussions of the Torah parsha

12:00 - 12:30pm - Open time for conversation (optional)

Location: Zoom

KS Members only

Adult members of KS who are interested in exploring messages of the Torah in depth are invited to join this group. Through sharing personal experiences and reactions to the weekly Torah readings, group members find themselves developing warm friendships and continuing to find deeper meaning in their lives.



Art by Yorem Raanan

If you are interested in joining, please contact Rosalie@KeremShalom.org

[REGISTER HERE](#)

Health & Comfort for Mind, Body and Soul

Insight Meditation with Cheryl Steinberg For KS Members and Non-Members

Tuesdays, 8:45 – 9:45am
(Zoom opens at 8:30am to schmooze)
Location: Zoom



Please join us for weekly meditation sessions with Cheryl Steinberg. This class is great for any of you who would like to learn meditation and those already meditating who would like the support of others. The class is based on Insight Meditation and offers instruction and learning around the practice.

Contact Cheryl if you have any questions:
meditation-with-cheryl-info@keremshalom.org

[REGISTER HERE](#) for the Tuesday morning Zoom

Kerem Shalom Men's Group

New members invited!

Are you interested in joining or starting a men's group? For over two decades, a small group of men connected with Kerem Shalom have been meeting regularly to witness each other's challenges, joys, and sorrows. Participants are happy to talk with Kerem Shalom members who might be interested in joining this group or starting a new one.



When this group began, its members were in their late 40s, a challenging, heads-down life stage for many men. Members are now in their 60s and 70s, a life stage with new challenges related to work, health, relationships, and family. The group explores these themes in semi-structured, confidential, and non-judgmental conversations which are "advice-free unless asked." Work, children, partners, the man's "role" as caregiver, and adventures are all grist for this mill. And while this is not a religious study group, religious and spiritual experiences are sometimes discussed.

If there is sufficient interest, members of the current group are more than happy to help a new group get underway, then step back and let that group evolve.

If you are interested in becoming a member of the current men's group or in starting a new one, please contact George Peabody at mens-group-info@keremshalom.org.

For up-to-date info on all the happenings at Kerem Shalom, see the KS Weekly News (emailed each Thursday), the [KS website](#), and [website calendar](#).

Special Thanks

To KS member and artist extraordinaire, **Ilana Manolson**, for her beautiful illustration of Kerem Shalom/Vineyard of Peace; to **Scott Sancetta** for the many hours he spends editing and formatting; to **Jody Kotkin** and **Robyn Barabe** for their consistent support and PR; to **Rabbi Darby Leigh**, **KS President David Luberoff** and **the Executive Committee** for their ongoing support; to **Diane Fulman** for researching and organizing our L.E.D. sessions; to **Marla Richmond** for creating "Marla's Corner"; to **Sue Wolff**, for spearheading the Growing Older in Community initiative; and to **the AP Committee** for their assistance in creating these offerings: **Carol Barron, Diane Fulman, Carolyn Gold, Marla Richmond, Scott Sancetta, Nancy Sokol, Sue Wolff** and **Board VP Jane Appell**, as well as incoming president **Jonathan Aibel** for their patience, creativity and good humor. Finally, I offer my deep, heartfelt thanks to all these terrific folks and to Kerem Shalom for giving me the opportunity to work with our volunteers to create new and exciting offerings for our adult members.

- Rosalie Gerut



Kerem Shalom is committed to making our programs accessible to all members of the community. [Click here](#) for more info on inclusion at Kerem Shalom.